

## Basement

# EVACUATION PLAN

## Department of Biology Life Sciences Building

### BASIC INSTRUCTIONS

1. Remain calm.
2. **DO NOT USE THE ELEVATORS**
3. **USE THE STAIRWELLS.**
4. Exit the building at ground level.
5. The recommended gathering point is the lawn in front of Woodburn Hall.
6. Do not re-enter the building until instructed by a member of the fire department.
7. For stairwell locations, see floor plan on the back of this flyer.
8. Assist mobility impaired to lobby by the elevators and inform fire department representatives about their location.

*May 2004*

### Evacuation Preparedness & Procedures

#### What to do:

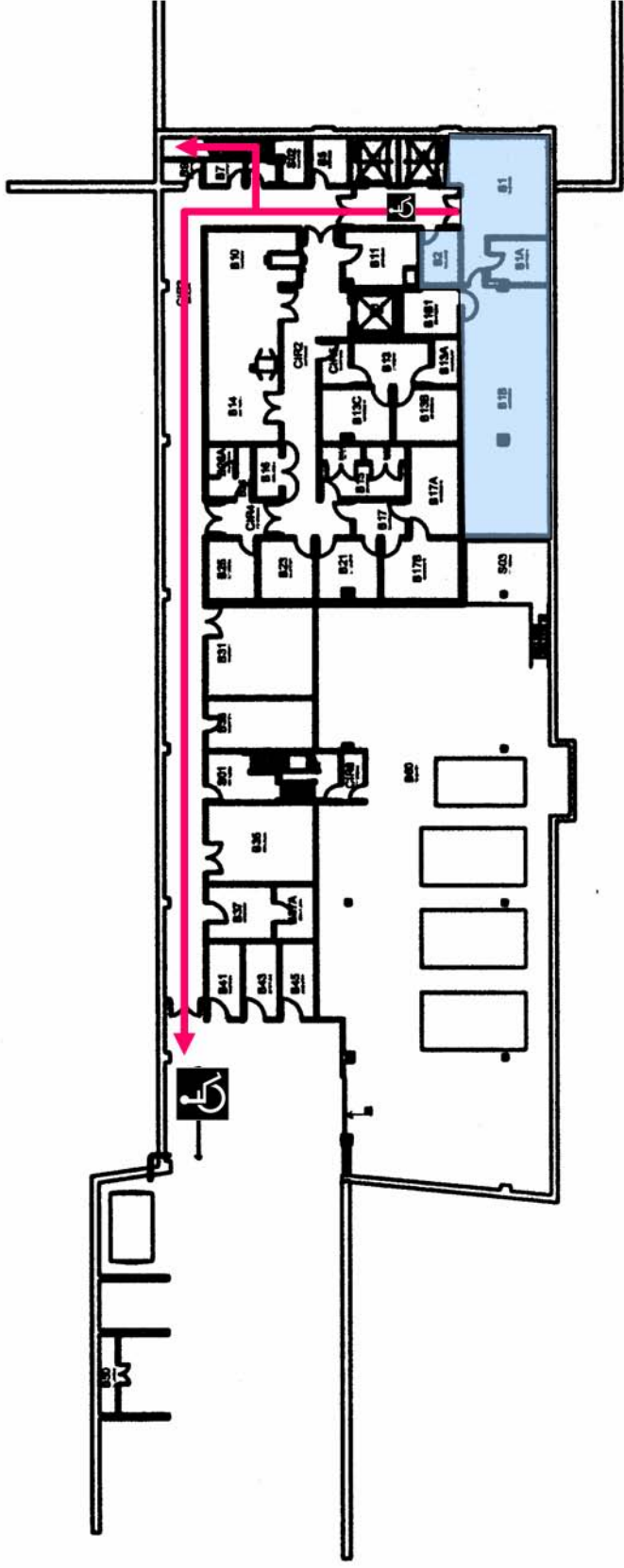
If the fire alarm sounds, all personnel will do the following unless otherwise directed by authorized personnel (i.e. Fire Department).

- Proceed in an orderly manner to the nearest designated exit. (Do not use elevator)
- Primary routes: Using the east or west stairwells, go to the ground-level and exit from the building. The central stairwell is a primary route of escape only for the 3<sup>rd</sup> floor.
- Secondary route (4<sup>th</sup>, 5<sup>th</sup>, 6<sup>th</sup> floors): Using the central stairwell, go down to the ground floor of the building and out the main doors.
- After leaving the building, proceed to the recommended assembly area on the lawn in front of Woodburn Hall.
- Remain at assembly area until given further instructions or allowed to return to the building by fire department representatives.
- Faculty who are teaching at the time an alarm sounds must ensure that all students have left their classroom before they evacuate.
- Faculty must review an evacuation plan with each class they teach during the first class meeting.

#### Mobility Impaired:

- If possible, the mobility impaired should use the appropriate exits on the basement & ground floors.
- Otherwise, they should be transported to the lobby by the main elevators and a fire department representative should be informed about their location.

# Evacuation Routes Department of Biology Basement



North

PRIMARY ROUTE



RAMP AVAILABLE FOR MOBILITY IMPAIRED  
OTHERWISE ASSEMBLE NEXT TO THE ELEVATORS

## Ground Floor

# EVACUATION PLAN

## Department of Biology Life Sciences Building

### BASIC INSTRUCTIONS

1. Remain calm.
2. **DO NOT USE THE ELEVATORS**
3. **USE THE STAIRWELLS.**
4. Exit the building at ground level.
5. The recommended gathering point is the lawn in front of Woodburn Hall.
6. Do not re-enter the building until instructed by a member of the fire department.
7. For stairwell locations, see floor plan on the back of this flyer.
8. Assist mobility impaired to lobby by the elevators and inform fire department representatives about their location.

*May 2004*

### Evacuation Preparedness & Procedures

#### What to do:

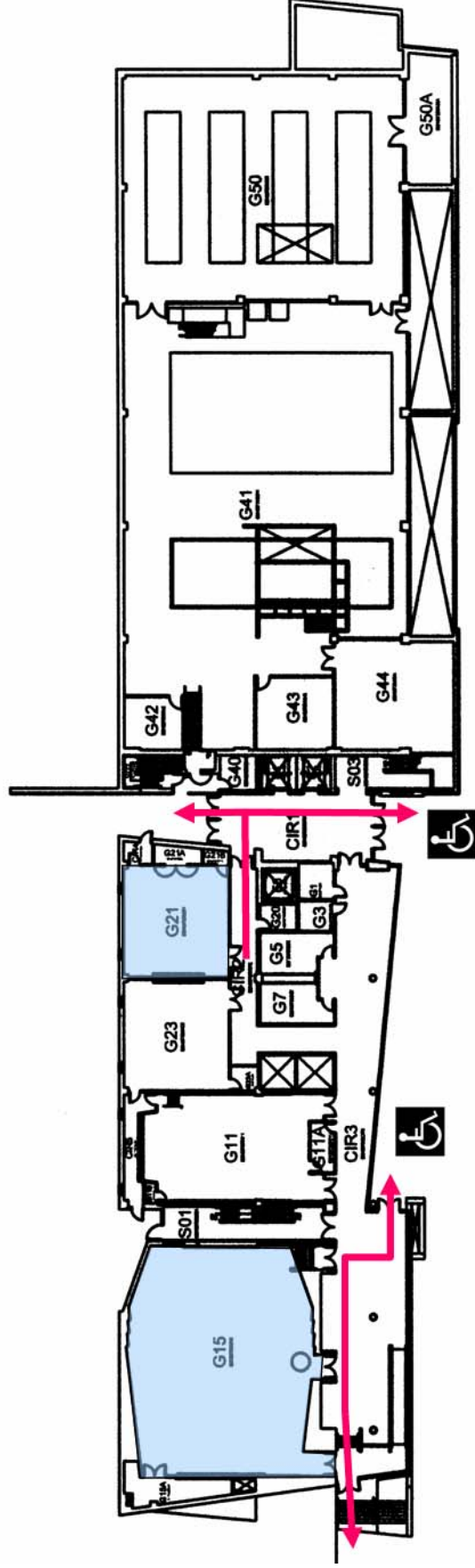
If the fire alarm sounds, all personnel will do the following unless otherwise directed by authorized personnel (i.e. Fire Department).

- Proceed in an orderly manner to the nearest designated exit. (Do not use elevator)
- Primary routes: Using the east or west stairwells, go to the ground-level and exit from the building. The central stairwell is a primary route of escape only for the 3<sup>rd</sup> floor.
- Secondary route (4<sup>th</sup>, 5<sup>th</sup>, 6<sup>th</sup> floors): Using the central stairwell, go down to the ground floor of the building and out the main doors.
- After leaving the building, proceed to the recommended assembly area on the lawn in front of Woodburn Hall.
- Remain at assembly area until given further instructions or allowed to return to the building by fire department representatives.
- Faculty who are teaching at the time an alarm sounds must ensure that all students have left their classroom before they evacuate.
- Faculty must review an evacuation plan with each class they teach during the first class meeting.

#### Mobility Impaired:

- If possible, the mobility impaired should use the appropriate exits on the basement & ground floors.
- Otherwise, they should be transported to the lobby by the main elevators and a fire department representative should be informed about their location.

# Evacuation Routes Department of Biology Ground Floor



— PRIMARY ROUTE



RAMPS AVAILABLE FOR MOBILITY IMPAIRED



North

## Third Floor

# EVACUATION PLAN

## Department of Biology Life Sciences Building

### BASIC INSTRUCTIONS

1. Remain calm.
2. **DO NOT USE THE ELEVATORS**
3. **USE THE STAIRWELLS.**
4. Exit the building at ground level.
5. The recommended gathering point is the lawn in front of Woodburn Hall.
6. Do not re-enter the building until instructed by a member of the fire department.
7. For stairwell locations, see floor plan on the back of this flyer.
8. Assist mobility impaired to lobby by the elevators and inform fire department representatives about their location.

*May 2004*

### Evacuation Preparedness & Procedures

#### What to do:

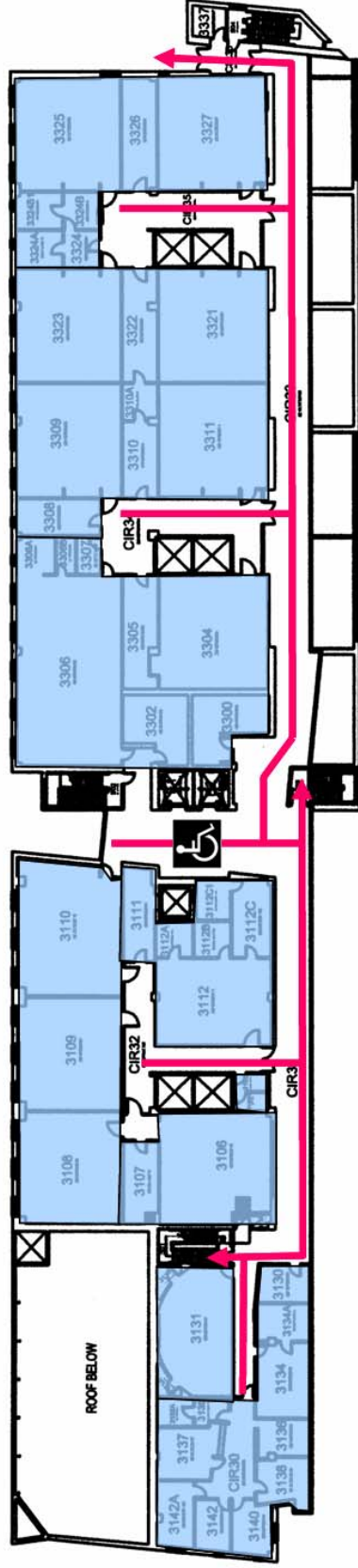
If the fire alarm sounds, all personnel will do the following unless otherwise directed by authorized personnel (i.e. Fire Department).

- Proceed in an orderly manner to the nearest designated exit. (Do not use elevator)
- Primary routes: Using the east or west stairwells, go to the ground-level and exit from the building. The central stairwell is a primary route of escape only for the 3<sup>rd</sup> floor.
- Secondary route (4<sup>th</sup>, 5<sup>th</sup>, 6<sup>th</sup> floors): Using the central stairwell, go down to the ground floor of the building and out the main doors.
- After leaving the building, proceed to the recommended assembly area on the lawn in front of Woodburn Hall.
- Remain at assembly area until given further instructions or allowed to return to the building by fire department representatives.
- Faculty who are teaching at the time an alarm sounds must ensure that all students have left their classroom before they evacuate.
- Faculty must review an evacuation plan with each class they teach during the first class meeting.

#### Mobility Impaired:

- If possible, the mobility impaired should use the appropriate exits on the basement & ground floors.
- Otherwise, they should be transported to the lobby by the main elevators and a fire department representative should be informed about their location.

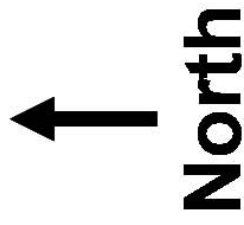
# Evacuation Routes Department of Biology Third Floor



— PRIMARY ROUTE



MOBILITY IMPAIRED AND/OR THOSE NEEDING ASSISTANCE  
ASSEMBLE NEXT TO THE ELEVATORS



North

## Forth Floor

# EVACUATION PLAN

## Department of Biology Life Sciences Building

### BASIC INSTRUCTIONS

1. Remain calm.
2. **DO NOT USE THE ELEVATORS**
3. **USE THE STAIRWELLS.**
4. Exit the building at ground level.
5. The recommended gathering point is the lawn in front of Woodburn Hall.
6. Do not re-enter the building until instructed by a member of the fire department.
7. For stairwell locations, see floor plan on the back of this flyer.
8. Assist mobility impaired to lobby by the elevators and inform fire department representatives about their location.

*May 2004*

### Evacuation Preparedness & Procedures

#### What to do:

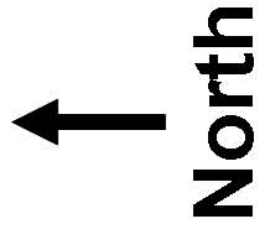
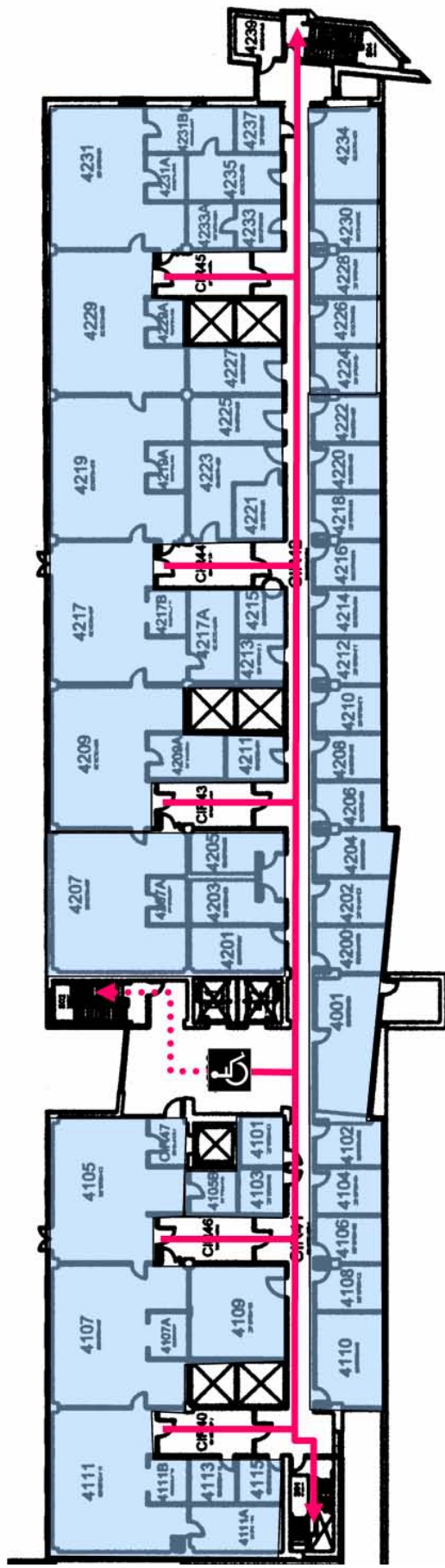
If the fire alarm sounds, all personnel will do the following unless otherwise directed by authorized personnel (i.e. Fire Department).

- Proceed in an orderly manner to the nearest designated exit. (Do not use elevator)
- Primary routes: Using the east or west stairwells, go to the ground-level and exit from the building. The central stairwell is a primary route of escape only for the 3<sup>rd</sup> floor.
- Secondary route (4<sup>th</sup>, 5<sup>th</sup>, 6<sup>th</sup> floors): Using the central stairwell, go down to the ground floor of the building and out the main doors.
- After leaving the building, proceed to the recommended assembly area on the lawn in front of Woodburn Hall.
- Remain at assembly area until given further instructions or allowed to return to the building by fire department representatives.
- Faculty who are teaching at the time an alarm sounds must ensure that all students have left their classroom before they evacuate.
- Faculty must review an evacuation plan with each class they teach during the first class meeting.

#### Mobility Impaired:

- If possible, the mobility impaired should use the appropriate exits on the basement & ground floors.
- Otherwise, they should be transported to the lobby by the main elevators and a fire department representative should be informed about their location.

# Evacuation Routes Department of Biology Forth Floor



— PRIMARY ROUTE  
⋯ SECONDARY ROUTE



MOBILITY IMPAIRED AND/OR THOSE NEEDING ASSISTANCE  
 ASSEMBLE NEXT TO THE ELEVATORS



## Fifth Floor

# EVACUATION PLAN

## Department of Biology Life Sciences Building

### BASIC INSTRUCTIONS

1. Remain calm.
2. **DO NOT USE THE ELEVATORS**
3. **USE THE STAIRWELLS.**
4. Exit the building at ground level.
5. The recommended gathering point is the lawn in front of Woodburn Hall.
6. Do not re-enter the building until instructed by a member of the fire department.
7. For stairwell locations, see floor plan on the back of this flyer.
8. Assist mobility impaired to lobby by the elevators and inform fire department representatives about their location.

*May 2004*

### Evacuation Preparedness & Procedures

#### What to do:

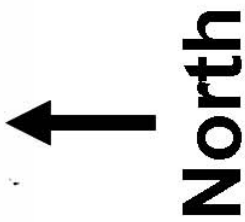
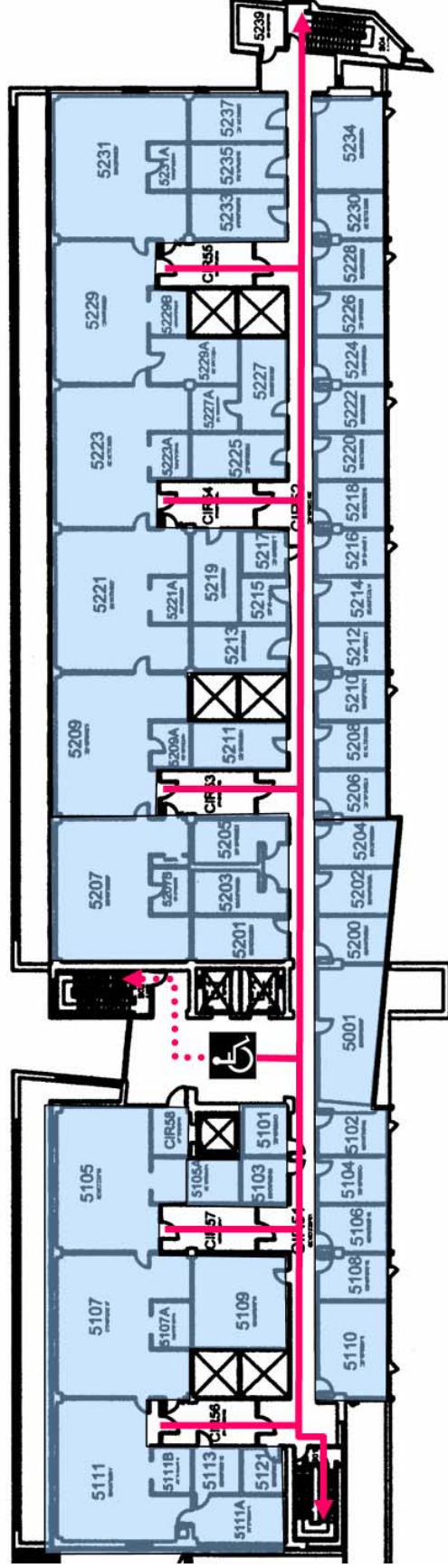
If the fire alarm sounds, all personnel will do the following unless otherwise directed by authorized personnel (i.e. Fire Department).

- Proceed in an orderly manner to the nearest designated exit. (Do not use elevator)
- Primary routes: Using the east or west stairwells, go to the ground-level and exit from the building. The central stairwell is a primary route of escape only for the 3<sup>rd</sup> floor.
- Secondary route (4<sup>th</sup>, 5<sup>th</sup>, 6<sup>th</sup> floors): Using the central stairwell, go down to the ground floor of the building and out the main doors.
- After leaving the building, proceed to the recommended assembly area on the lawn in front of Woodburn Hall.
- Remain at assembly area until given further instructions or allowed to return to the building by fire department representatives.
- Faculty who are teaching at the time an alarm sounds must ensure that all students have left their classroom before they evacuate.
- Faculty must review an evacuation plan with each class they teach during the first class meeting.

#### Mobility Impaired:

- If possible, the mobility impaired should use the appropriate exits on the basement & ground floors.
- Otherwise, they should be transported to the lobby by the main elevators and a fire department representative should be informed about their location.

# Evacuation Routes Department of Biology Fifth Floor



- PRIMARY ROUTE
- ..... SECONDARY ROUTE
-  MOBILITY IMPAIRED AND/OR THOSE NEEDING ASSISTANCE ASSEMBLE NEXT TO THE ELEVATORS

## Sixth Floor

# EVACUATION PLAN

## Department of Biology Life Sciences Building

### BASIC INSTRUCTIONS

1. Remain calm.
2. **DO NOT USE THE ELEVATORS**
3. **USE THE STAIRWELLS.**
4. Exit the building at ground level.
5. The recommended gathering point is the lawn in front of Woodburn Hall.
6. Do not re-enter the building until instructed by a member of the fire department.
7. For stairwell locations, see floor plan on the back of this flyer.
8. Assist mobility impaired to lobby by the elevators and inform fire department representatives about their location.

*May 2004*

### Evacuation Preparedness & Procedures

#### What to do:

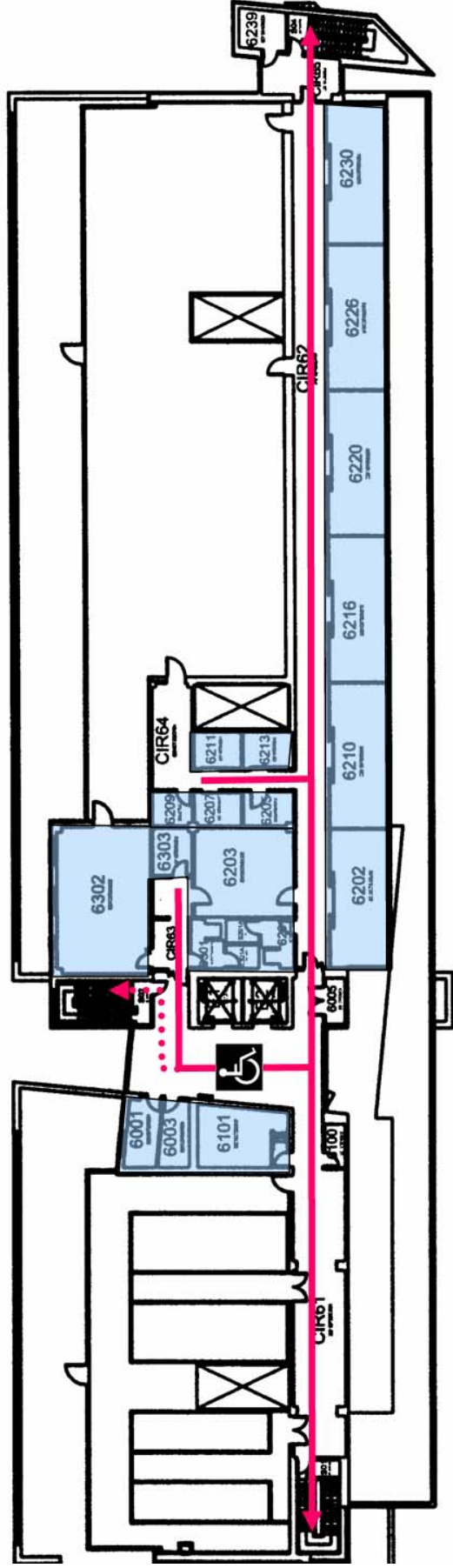
If the fire alarm sounds, all personnel will do the following unless otherwise directed by authorized personnel (i.e. Fire Department).

- Proceed in an orderly manner to the nearest designated exit. (Do not use elevator)
- Primary routes: Using the east or west stairwells, go to the ground-level and exit from the building. The central stairwell is a primary route of escape only for the 3<sup>rd</sup> floor.
- Secondary route (4<sup>th</sup>, 5<sup>th</sup>, 6<sup>th</sup> floors): Using the central stairwell, go down to the ground floor of the building and out the main doors.
- After leaving the building, proceed to the recommended assembly area on the lawn in front of Woodburn Hall.
- Remain at assembly area until given further instructions or allowed to return to the building by fire department representatives.
- Faculty who are teaching at the time an alarm sounds must ensure that all students have left their classroom before they evacuate.
- Faculty must review an evacuation plan with each class they teach during the first class meeting.

#### Mobility Impaired:

- If possible, the mobility impaired should use the appropriate exits on the basement & ground floors.
- Otherwise, they should be transported to the lobby by the main elevators and a fire department representative should be informed about their location.

# Evacuation Routes Department of Biology Sixth Floor



— PRIMARY ROUTE  
..... SECONDARY ROUTE



MOBILITY IMPAIRED AND/OR THOSE NEEDING ASSISTANCE  
ASSEMBLE NEXT TO THE ELEVATORS

